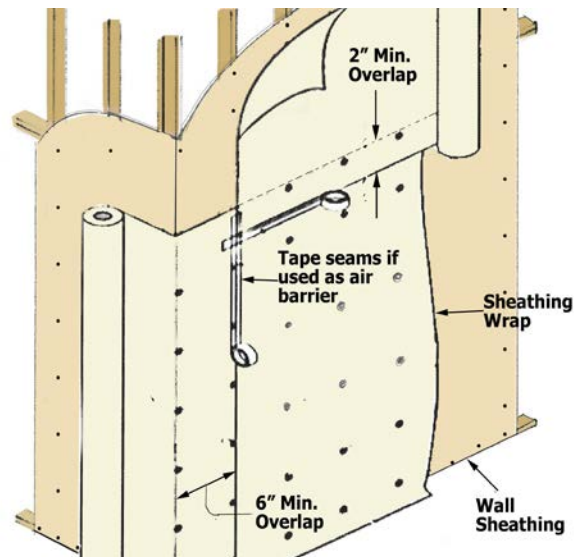
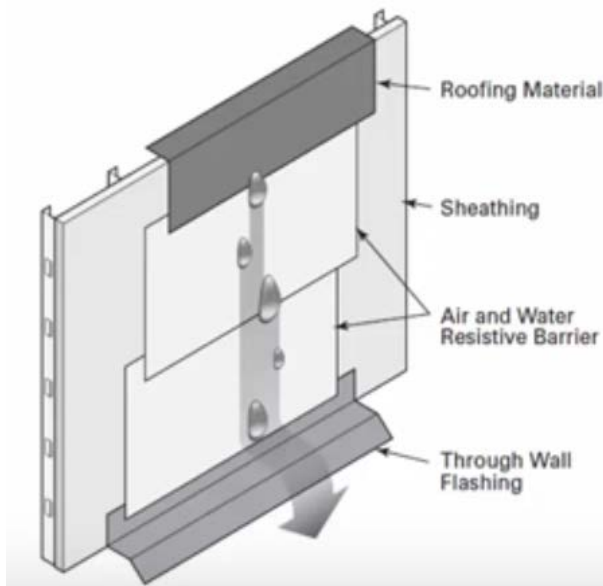


Water Resistive Barrier

2020 Building Code requirements and informational handout

R703.1 Exterior walls shall provide the building with a weather-resistant exterior wall envelope with approved corrosion resistant flashing described in Section **R703.4**. The flashing shall be applied shingle-fashion in such a manner to prevent water from entering into the wall cavity.

1. Verify that WRB is an approved product.
2. WRB shall be applied horizontally shingle fashion over exterior wall sheathing.
3. All seams shall be taped with approved acrylic seam tape.
4. WRB shall be free from holes or breaks in the membrane.
5. Vertical joints lapped minimum 6", and horizontal joints lapped minimum 2", **R703.2**.
6. Kickout flashings are required on newly built homes and when residing an existing home where the lowest part of the roof's eave edge comes in contact with a vertical wall plane, **R903.2.1** and **R903.2.1.1**.



Accuracy – Efficiency – Uniformity